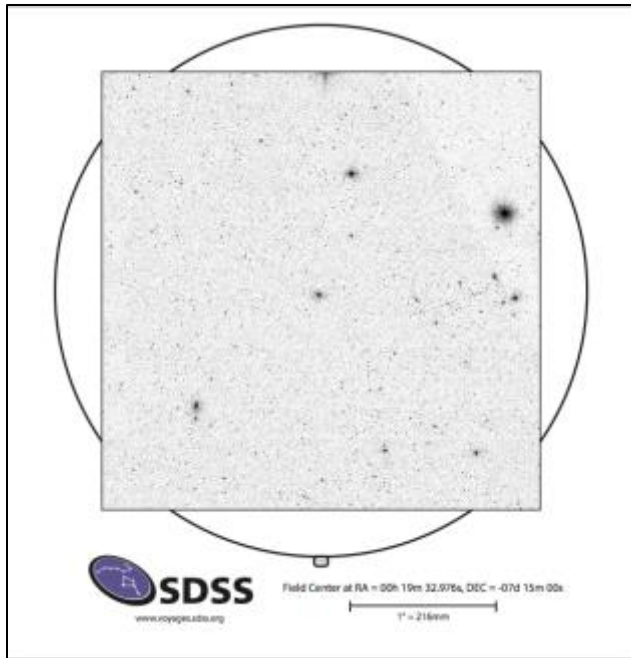




What Have You Got on Your Plate?

Whether you are using your plate in a classroom or planetarium, you will want to know how to find information about the objects on your poster.



Where Was the Telescope Pointed?

The first thing most people want to know is what part of the sky is associated with this plate. There is an online tool at [Constellation Boundaries](#) where you can type the RA and Dec for your plate. The tool returns the name of the constellation associated with the coordinates you enter.

Look for a box at the bottom of the page by **Target Name**. Enter the RA and Dec using a colon to separate the coordinates and a comma between the RA and Dec.

Example - 00:19:32.97,-07:15:00

A new tab will open with the abbreviation for your constellation at the bottom. Return to the first tab if you do not recognize the abbreviation.

Example – Cet stands for Cetus

Want to Know More? Try uploading an image to Astrometry.net.

We are going to follow a set of steps similar to those in the Voyages activity called [Constellations](#).

1. Start at the [Plate Browser Tool](#)
2. Locate your plate's number from one of the survey dropdown boxes.
3. Click Get Plate
4. There is a lot you can do from the Plate Browser page for your location but for this activity just click **View in Navigate**.
5. After you look around, click off the SDSS Plate checkbox on the left.
6. Before you take a screenshot of your window, click in someplace far off to the edge to move the green box and location numbers out of the image. Take a screen shot of the window and save the file.
7. The URL for uploading images to Astrometry.net is <http://nova.astrometry.net/upload>. Upload the image and wait. The website is locating the sky position of your image. When your results are returned, click the Go to results page.
8. The results page gives you a lot of information about the part of the sky your plate belongs with. You can even toggle back to the SDSS database. See if you can find some other interesting objects on your plate? Can you locate them on your poster? Is there a spectrum

**Orient Your Plate Marked Side
Toward the Poster**